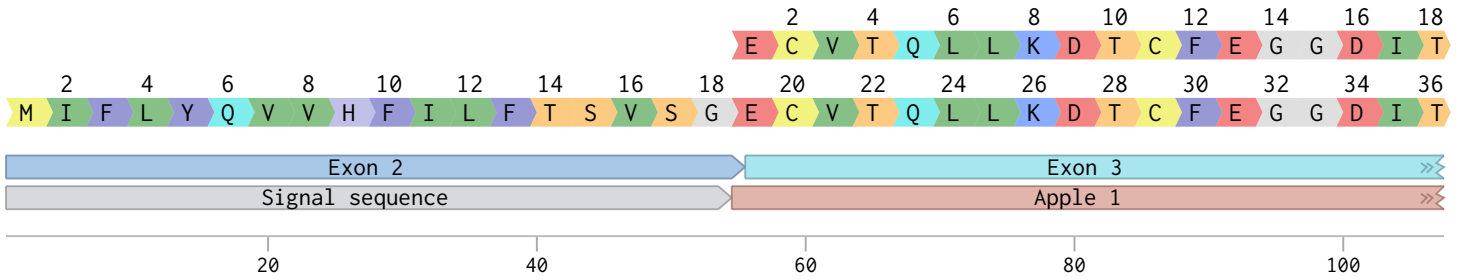
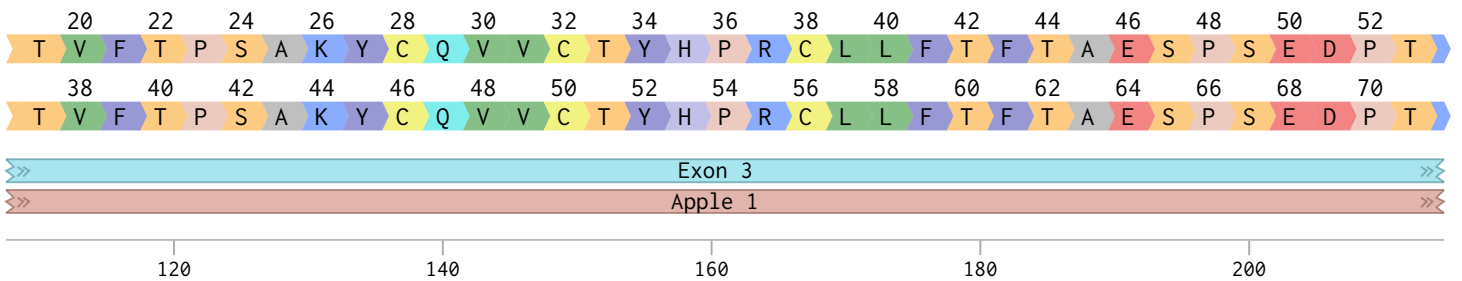


# NM\_000128.4\_FXI (2945 bp)

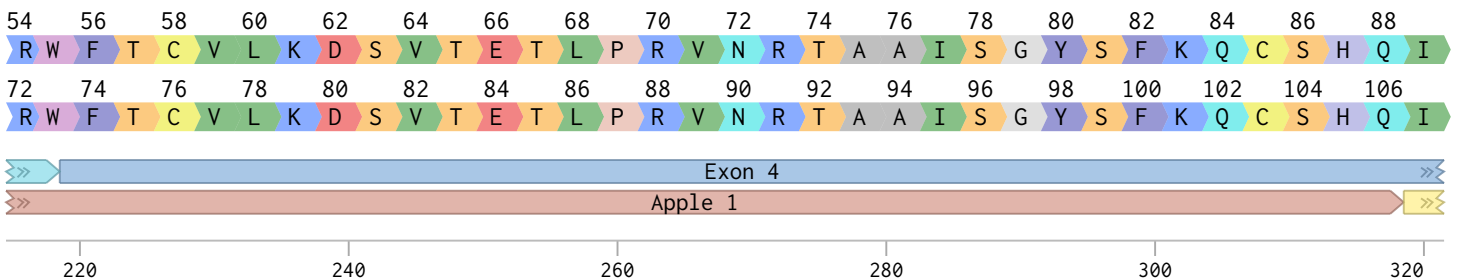
ATGATTTTCTTATATCAAGTGGTACATTTTCATTTTATTTACTTCAGTTTCTGGTGAATGTGTGACTCAGTTGTTGAAGGACACCTGCTTTGAAGGAGGGGACATTAC  
 TACTAAAAGAATATAGTTCACCATGTAAAGTAAAATAAATGAAGTCAAAGACCACTTACACACTGAGTCAACAACCTCTGTGGACGAACTTCTCCCCTGTAATG



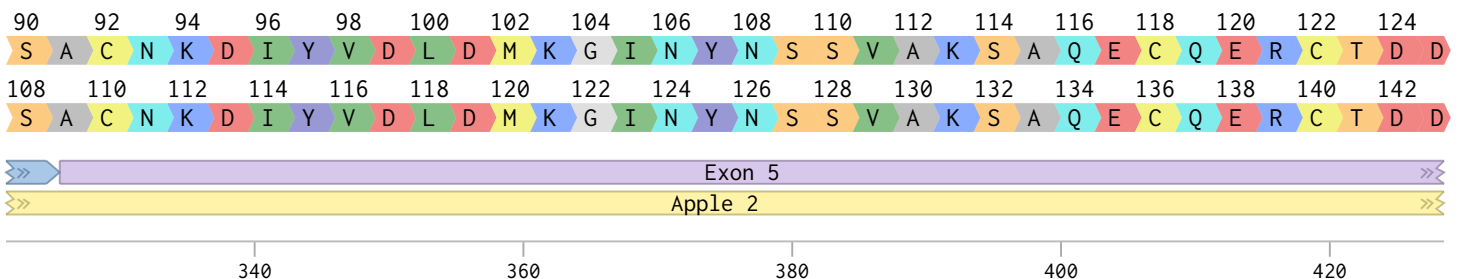
TACGGTCTTCACACCAAGCGCCAAGTACTGCCAGGTAGTCTGCACTTACCACCCAAGATGTTTACTCTTCACTTTACAGCGGGAATCACCATCTGAGGATCCCACCC  
 ATGCCAGAAGTGTGGTTCGCGGTTTCATGACGGTCCATCAGACGTGAATGGTGGGTTTACAAATGAGAAGTGAAGTGCCGCCTTAGTGGTAGACTCTAGGGTGGG

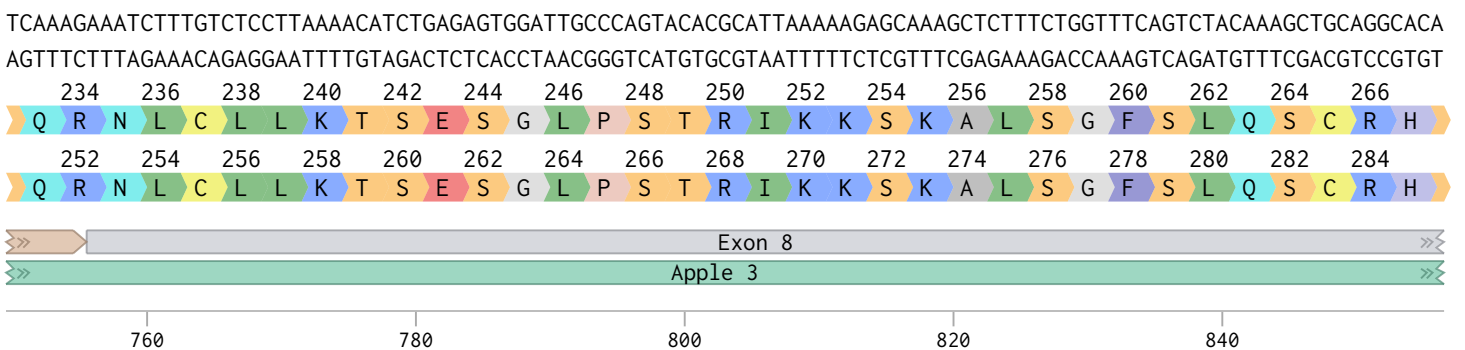
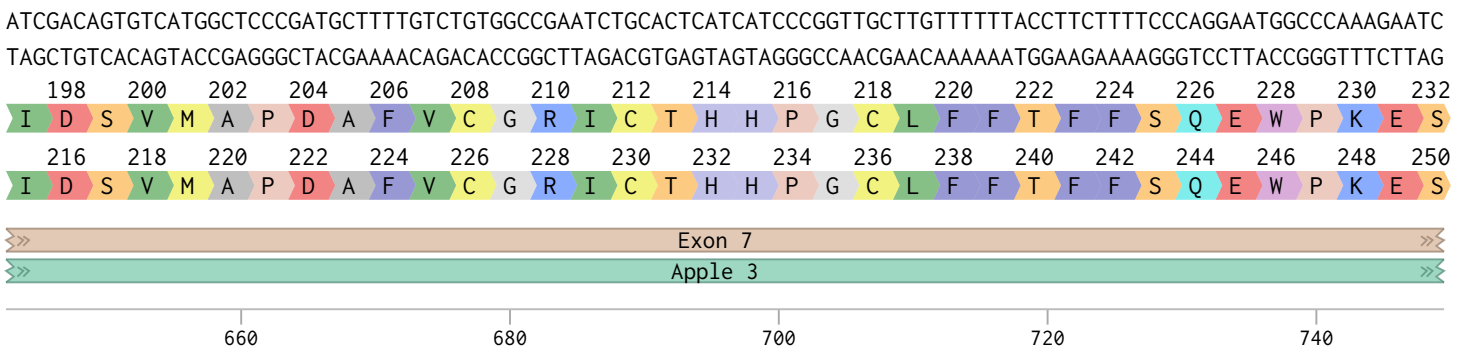
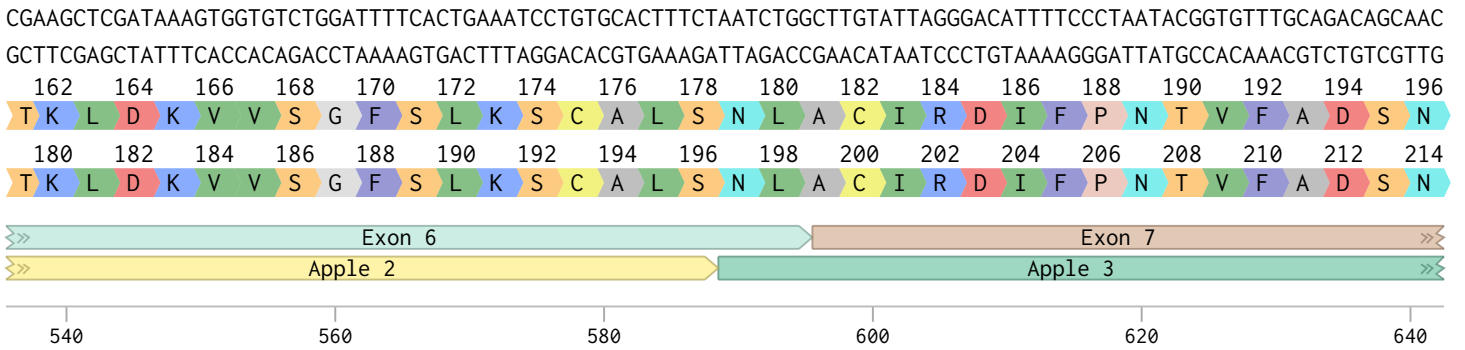
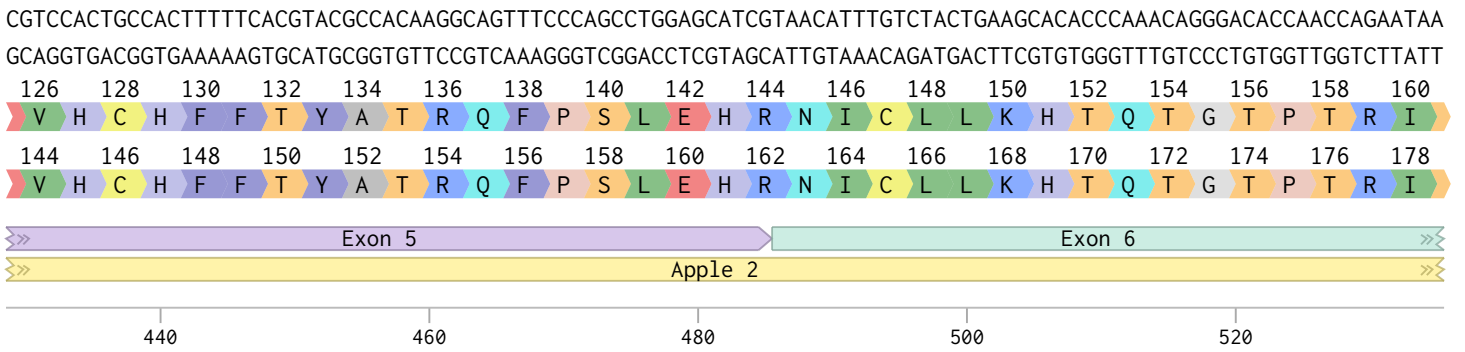


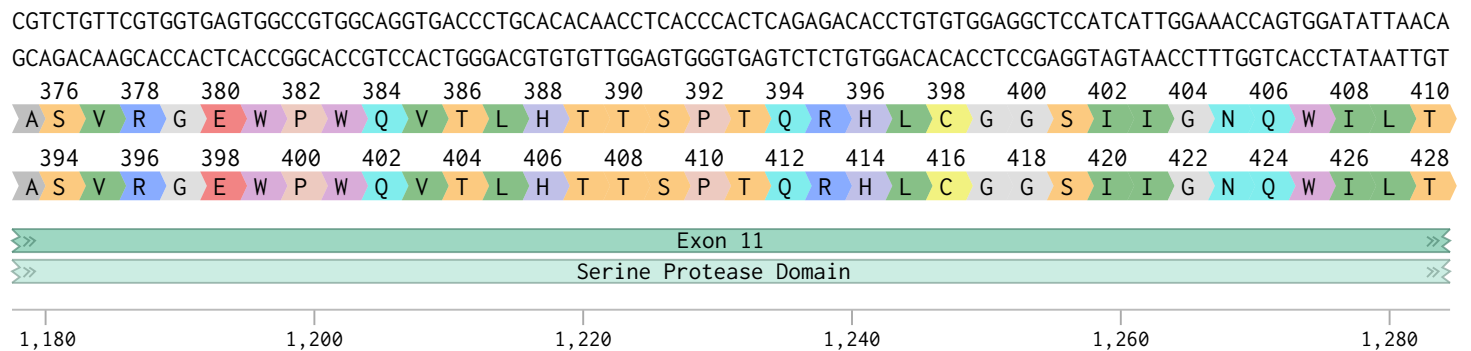
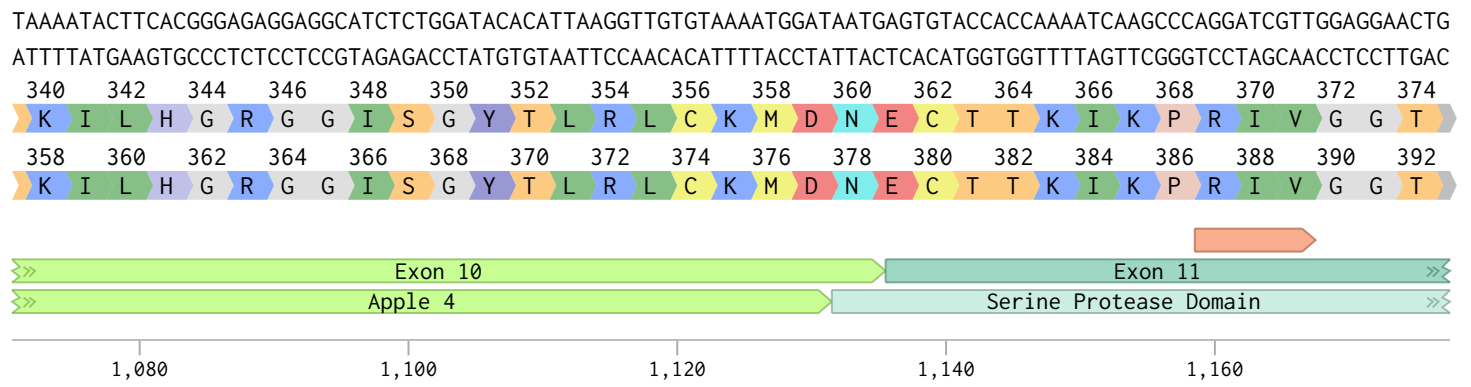
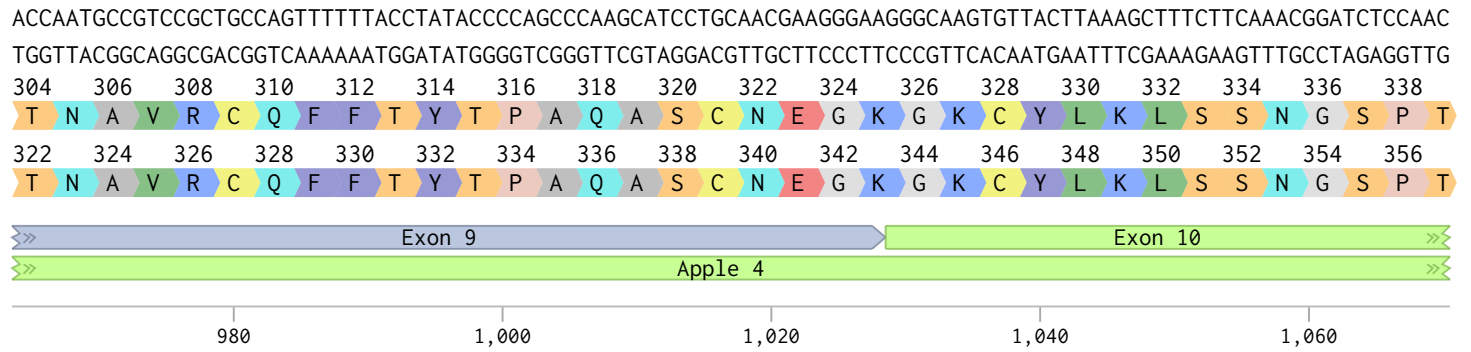
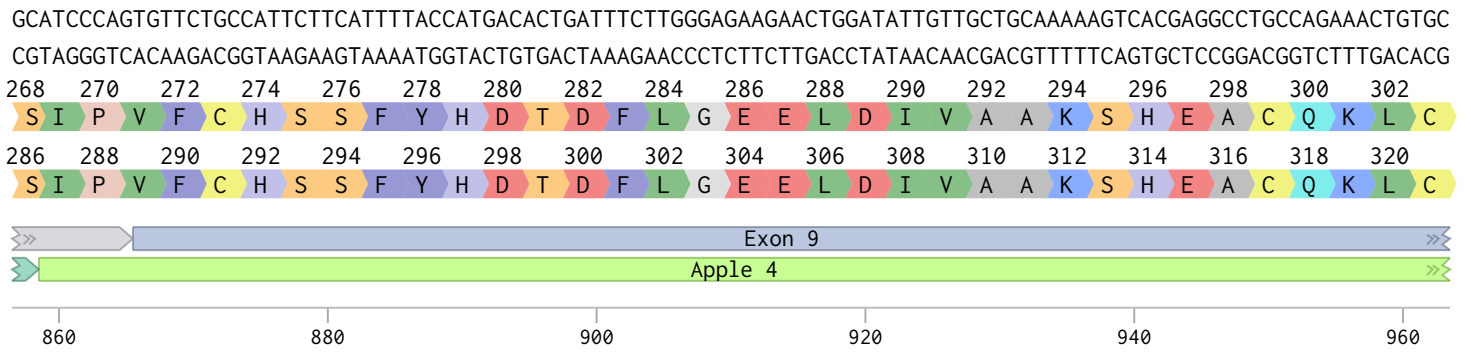
GATGGTTTACTTGTGTCTGAAAGACAGTGTACAGAAACACTGCCAAGAGTGAATAGGACAGCAGCGATTCTGGGTATTCTTTCAAGCAATGCTCACACCAAATA  
 CTACCAAATGAACACAGGACTTTCTGTCACAATGTCTTTGTGACGGTTCCTACTTATCTGTGCTGCTAAAGACCCATAAGAAAGTTCGTTACGAGTGTGGTTTAT

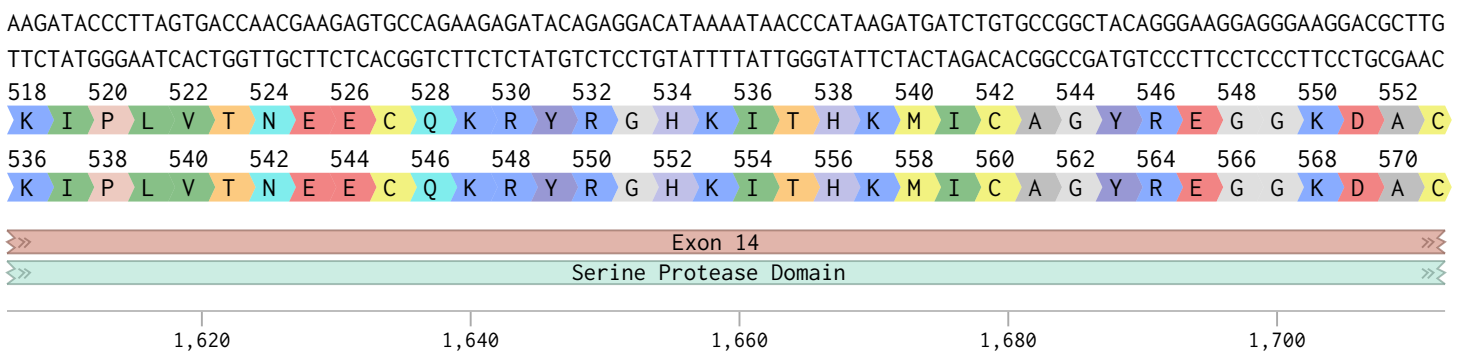
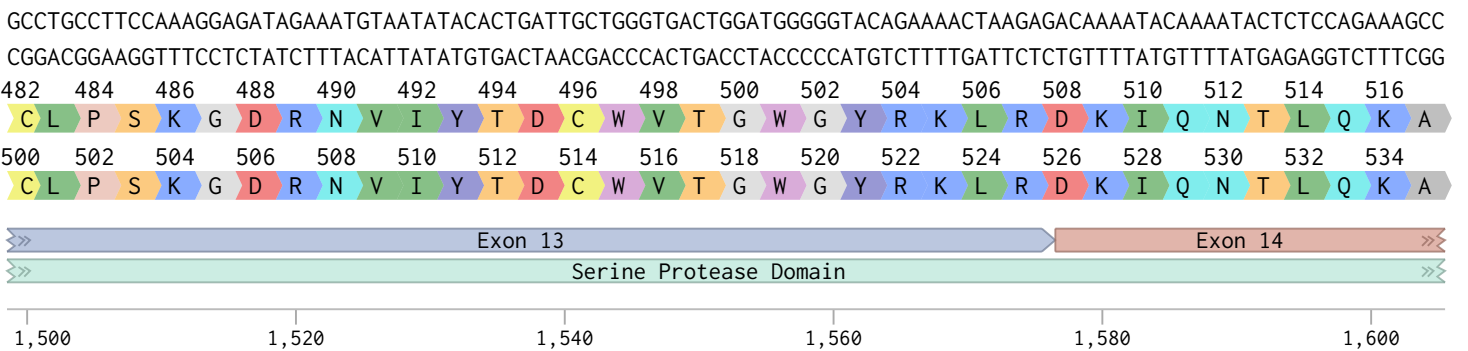
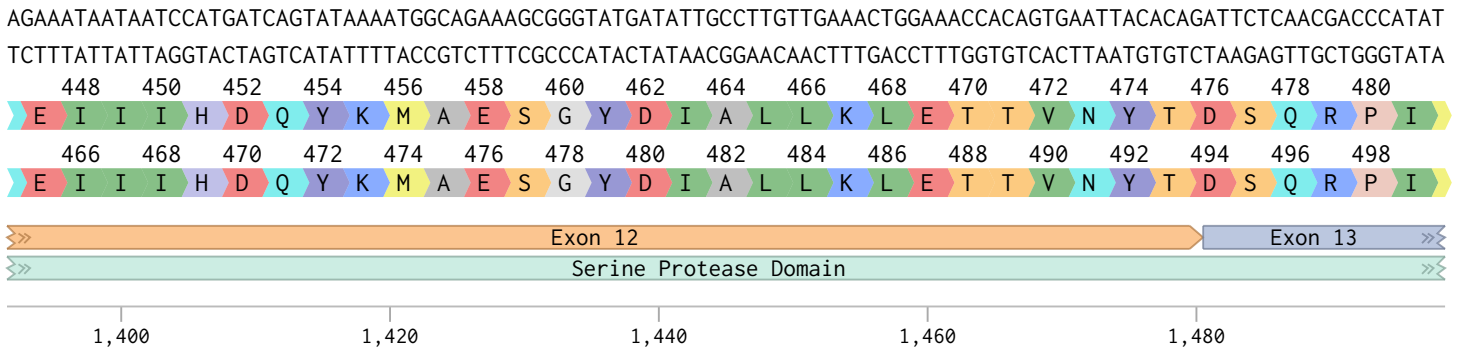
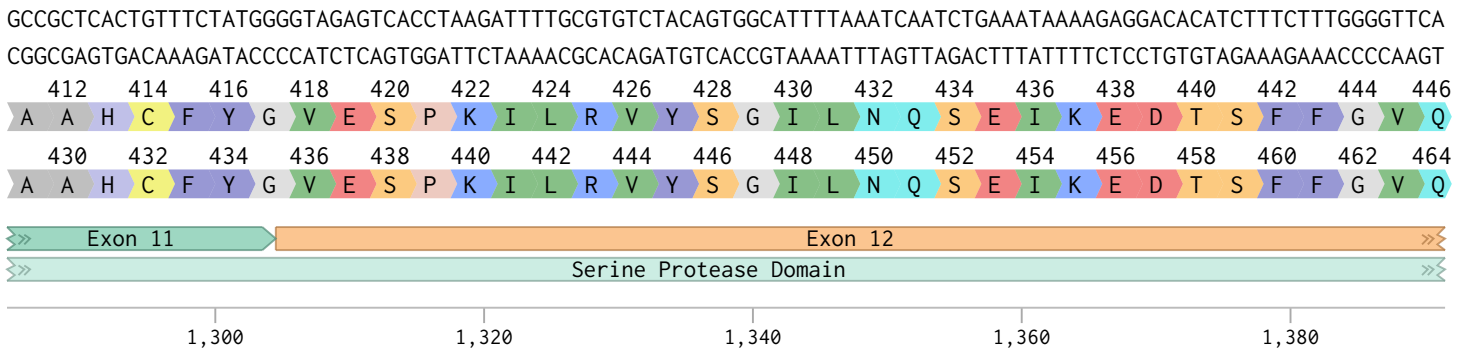


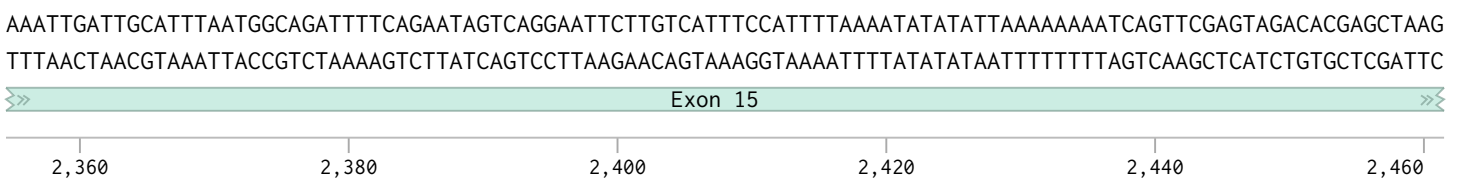
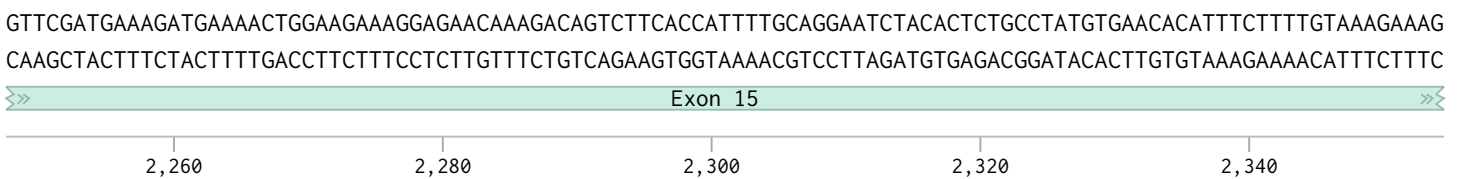
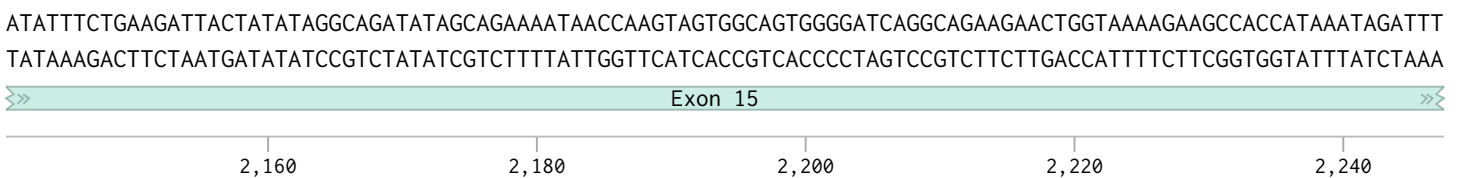
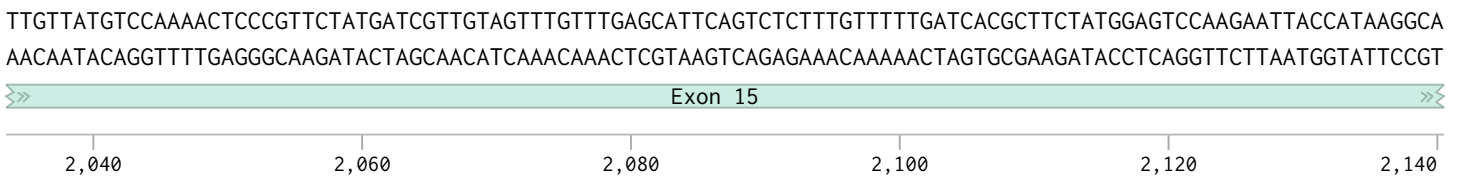
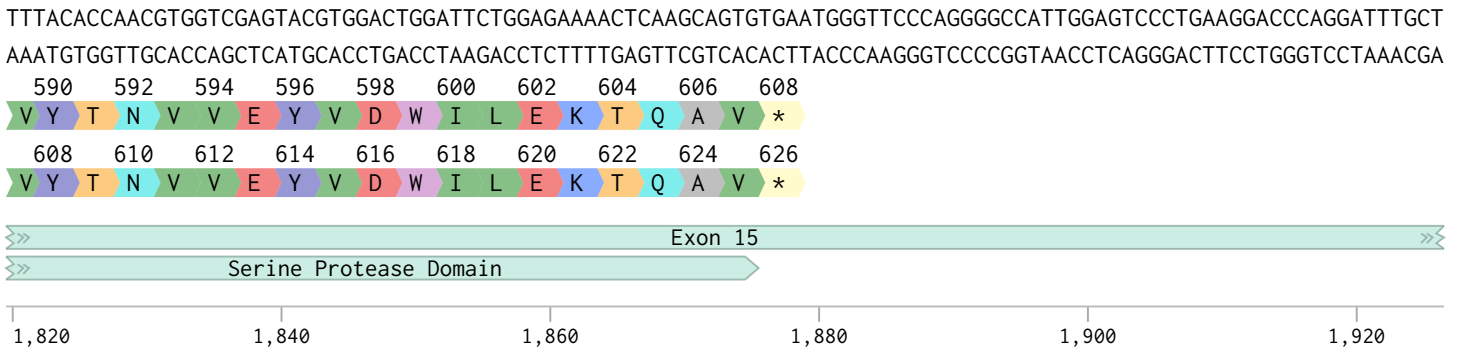
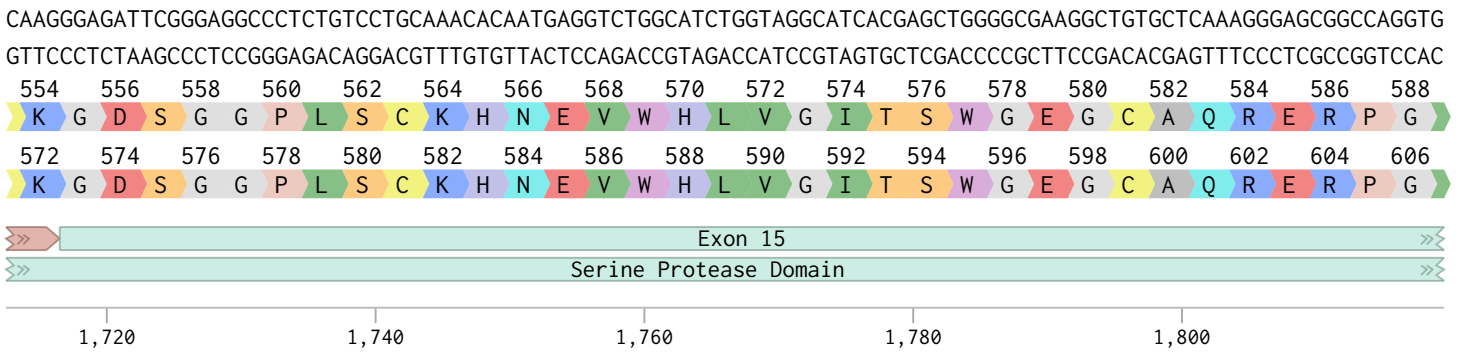
AGCGCTTGCAACAAAGACATTTATGTGGACCTAGACATGAAGGCATAAACTATAACAGCTCAGTTGCCAAGAGTGCTCAAGAATGCCAAGAAAGATGCACGGATGA  
 TCGCGAACGTTGTTTCTGTAATACACCTGGATCTGTACTTCCCGTATTTGATATTGTGCGAGTCAACGGTTCACAGAGTTCTACGGTCTTTCTACGTGCCTACT



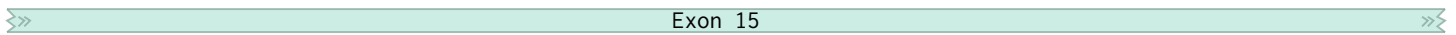






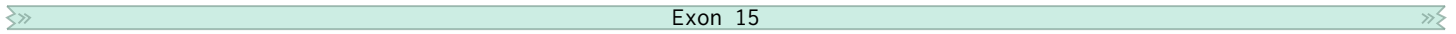


AGTGAATGTGAAGATAACAGAATTTCTGTGTGGAAGAGGATTACAAGCAGCAATTTACCTGGAAGTGATACCTTAGGGGCAATCTTGAAGATACACTTTCCTGAAAA  
TCACTTACACTTCTATTGTCTTAAAGACACACCTTCTCCTAATGTTTCGTCGTTAAATGGACCTTCACTATGGAATCCCCGTTAGAACTTCTATGTGAAAGGACTTTT



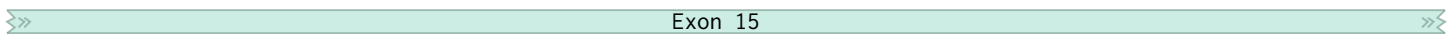
2,480 2,500 2,520 2,540 2,560

ATGATTTGTGATGGATTGTATATTTATTTAAAATATCTTGGGAGGGGAGGCTGATGGAGATAGGGAGCATGCTCAAACCTCCCTAAGACAAGCTGCTGCTGTGACTA  
TACTAAACACTACCTAACATATAAATAAATTTTATAGAACCCTCCCCTCCGACTACCTCTATCCCTCGTACGAGTTTGGAGGGATTCTGTTTCGACGACGACACTGAT



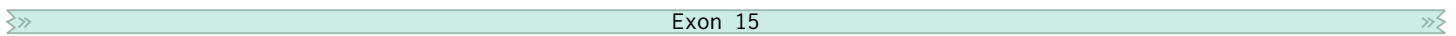
2,580 2,600 2,620 2,640 2,660

TGGGCTCCCAAAGAGCTAGATCGTATATTTATTTGACAAAAATCACCATAGACTGCATCCATACTACAGAGAAAAACAATTAGGGCGCAATGGATAGTTACAGTA  
ACCCGAGGGTTTCTCGATCTAGCATATAAATAAACTGTTTTAGTGGTATCTGACGTAGGTATGATGTCTCTTTTTTGTAAATCCCGGTTTACCTATCAATGTCAT



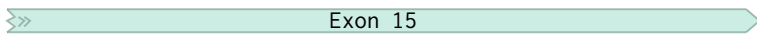
2,680 2,700 2,720 2,740 2,760 2,780

AAGTCTTCAGCAAGCAGCTGCCTGTATTCTAAGCACTGGGATTTTCTGTTTCGTGCAAATATTTATCTCATTATTGTTGTGATCTAGTTCAATAACCTAGAATTTGA  
TTCAGAAGTCGTTTCGTCGACGGACATAAGATTCGTGACCCTAAAAGACAAAGCACGTTTATAAATAGAGTAATAACAACACTAGATCAAGTTATTGGATCTTAACT



2,800 2,820 2,840 2,860 2,880

ATTGTCACCACATAGCTTTCAATCTGTGCCAACAACTATAACAATTCATCAAGTGTG  
TAACAGTGGTGTATCGAAAGTTAGACACGTTGTTGATATGTTAAGTAGTTCACAC



2,890 2,900 2,910 2,920 2,930 2,940